

## SPOT SLED15000 BRANCA LED 7W 3000K 80



Luminária spot para trilho com fecho de abertura de 30°. Corpo em alumínio injetado com acabamento na cor branca e anti ofuscante em plástico injetado com acabamento na cor preta. Lente em acrílico injetado. Indicado para iluminação de destaque etc.

Fluxo luminoso – 525 lm

Potência – 7,2 W

Intensidade pico – 1457cd

CCT – 3082K



IRC – 81,8

Coordenada CIE 1931 – x- 0,428 y- 0,396

A x L x C - 80x80x49

Peso - 0,21kg

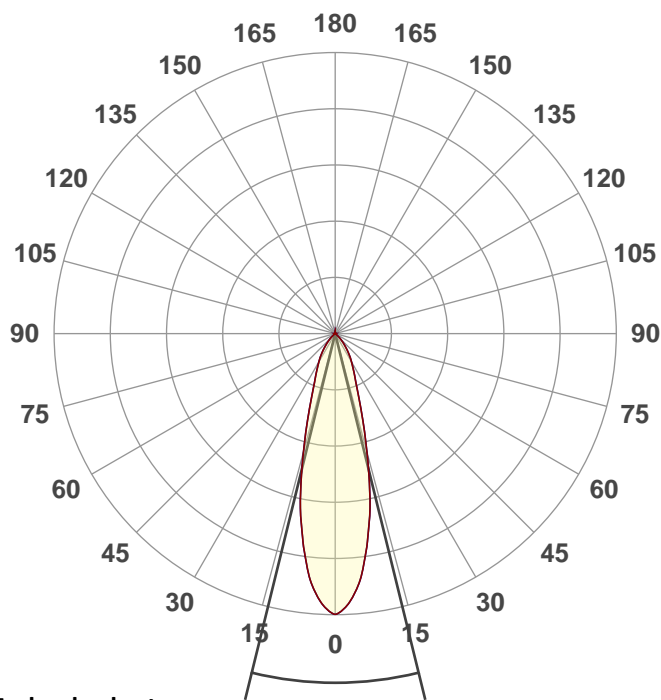
IP - 20 - Uso Interno

IK - 00 – Não aplicável

Alimentação - 220Vac.

Data do ensaio

18/01/2021 12:06:54



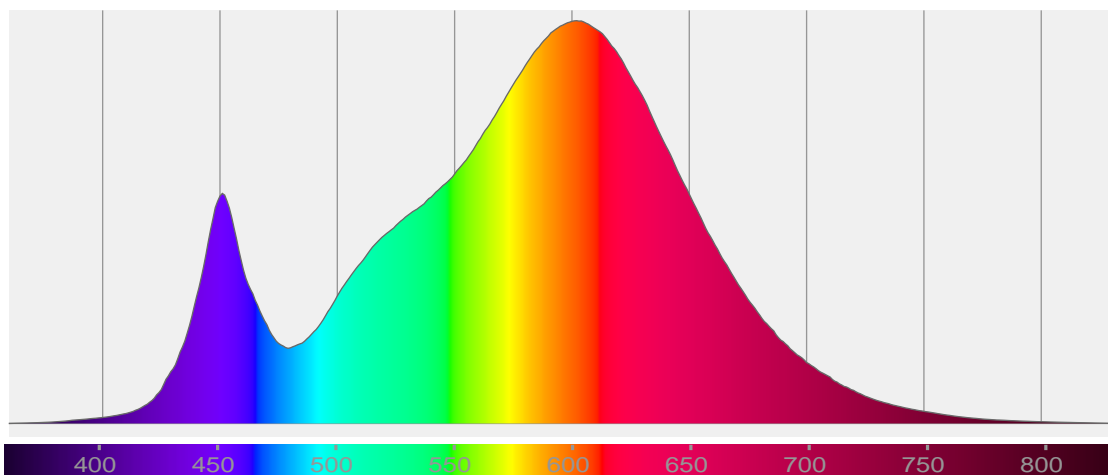
**Rf 83,5**

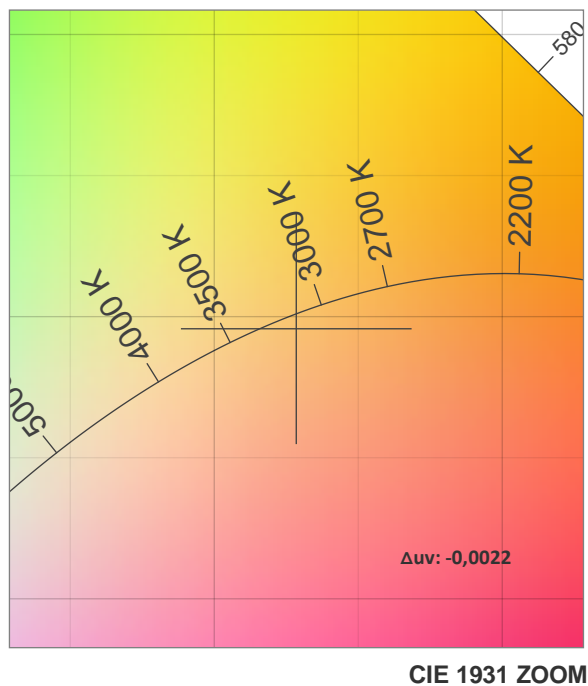
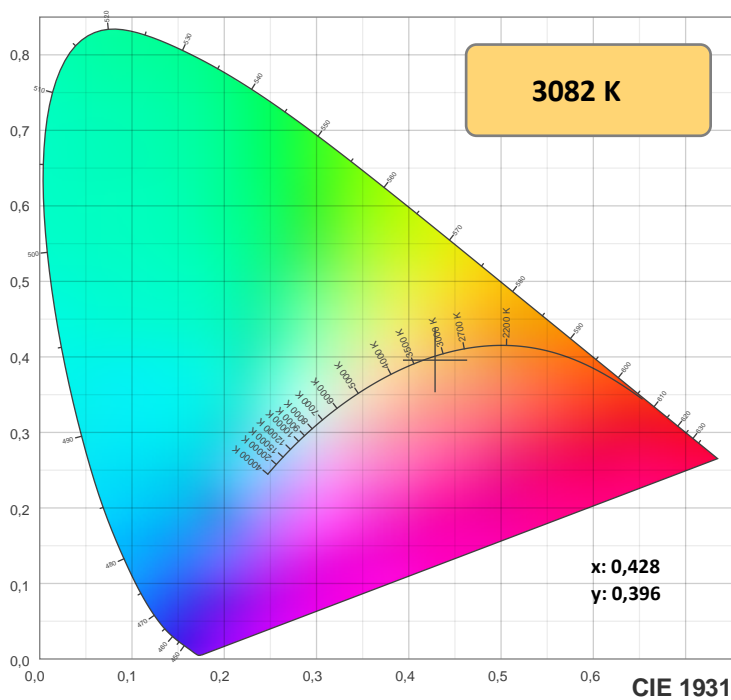
Fidelity index Rf

**Rg 97,2**

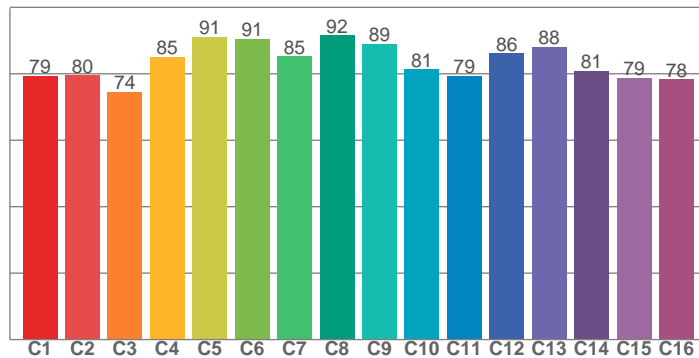
Gamut index Rg

Hue Bin	R <sub>f</sub>	Shifts (%)	
		Chroma	Hue
1	79	-12%	-1%
2	80	-9%	8%
3	74	-3%	13%
4	85	3%	9%
5	91	4%	5%
6	91	5%	-3%
7	85	-2%	-9%
8	92	-4%	-3%
9	89	-7%	2%
10	81	-6%	9%
11	79	-1%	14%
12	86	7%	4%
13	88	6%	-5%
14	81	6%	-14%
15	79	-1%	-14%
16	78	-8%	-15%

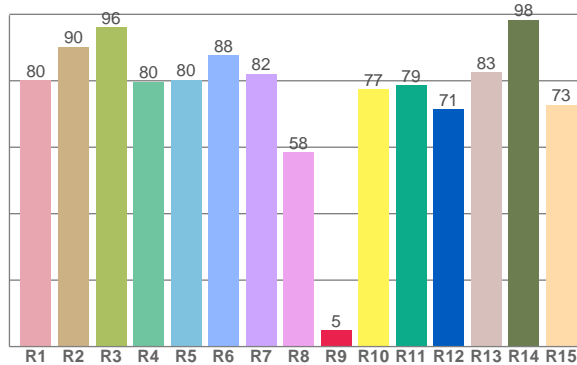




TM-30: 83,5



CRI: 81,8 (R1-R8)



CRIRA R1-R8 / CRIre R1-R15

R1	R2	R3	R4	R5	R6	R7	R8	R9	R10	R11	R12	R13	R14	R15
80,2	90,2	96,1	79,8	80,3	87,6	82,2	58,4	4,9	77,4	78,7	71,4	82,5	98,4	72,7

TM30 valores C. 16 valores extraídos dos 99.

C1	C2	C3	C4	C5	C6	C7	C8	C9	C10	C11	C12	C13	C14	C15	C16
79,5	79,5	74,5	85,1	91,2	90,6	85,2	91,5	89,0	81,3	79,3	86,1	88,2	80,9	78,7	78,4

## Parametros de cor

Temperatura de cor	Índice de reprodução de cor	Reprodução de cor vermelho R9	Color fidelity	Color gamut	Color quality scale	Coordenada de cor cie 1931	Coordenada de cor cie 1931	Coordenada de cor	Coordenada de cor	Color deviation from black body
CCT	IRC	CRI R9	TM30 Rf	TM30 Rg	CQS	x	y	u	v	Δuv
3082 K	81,8	4,9	83,5	97,2	80,4	0,428	0,396	0,249	0,345	-0,0022

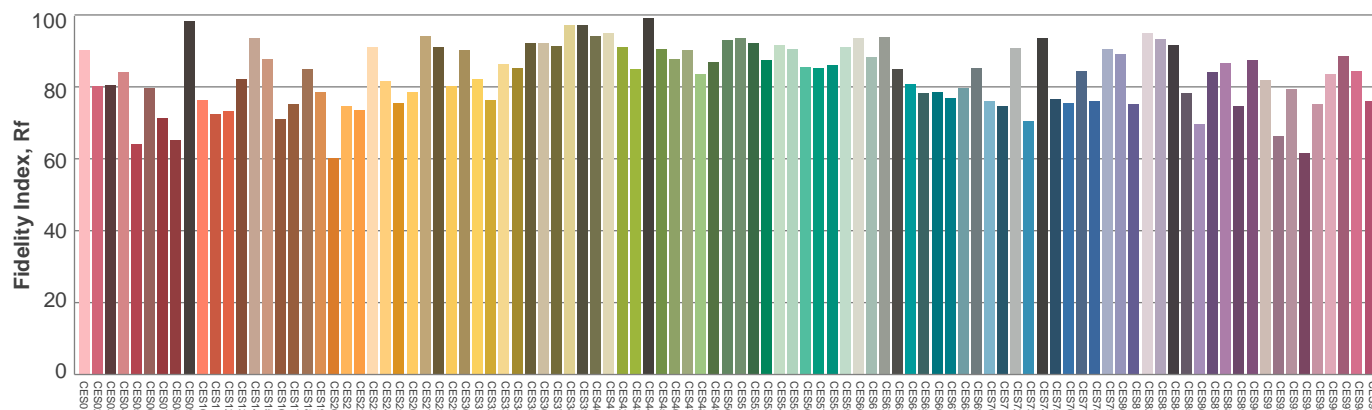
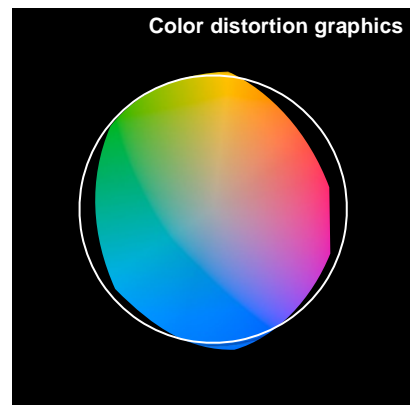
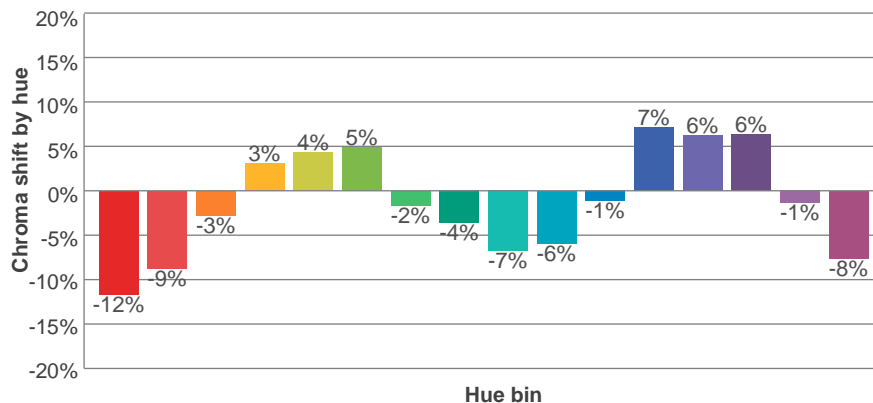
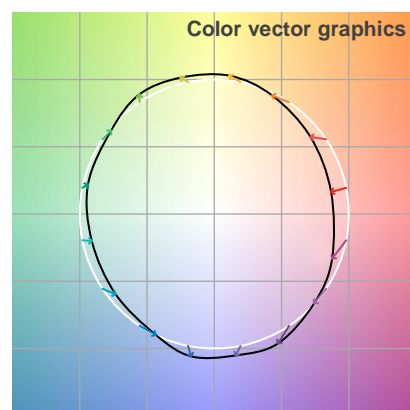
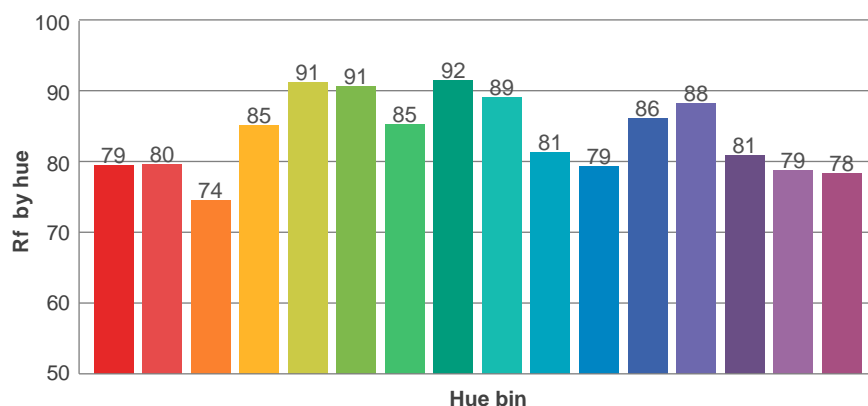
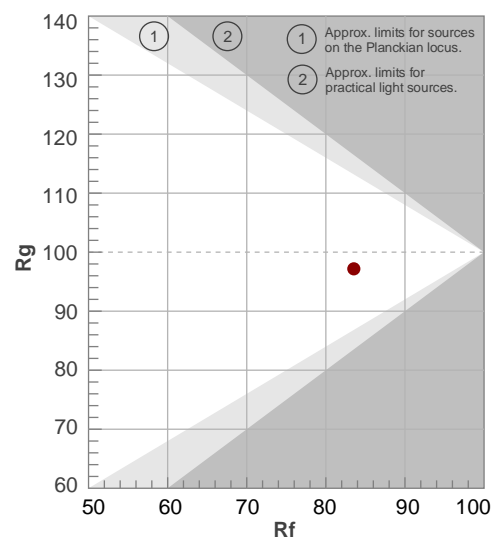
**Rf 83,5**

Fidelity index Rf

**Rg 97,2**

Gamut index Rg

Hue Bin	Ri	Shifts (%)	
		Chroma	Hue
1	79	-12%	-1%
2	80	-9%	8%
3	74	-3%	13%
4	85	3%	9%
5	91	4%	5%
6	91	5%	-3%
7	85	-2%	-9%
8	92	-4%	-3%
9	89	-7%	2%
10	81	-6%	9%
11	79	-1%	14%
12	86	7%	4%
13	88	6%	-5%
14	81	6%	-14%
15	79	-1%	-14%
16	78	-8%	-15%



Avaliação todas as amostras de cores

**Glare Evaluation According to UGR**

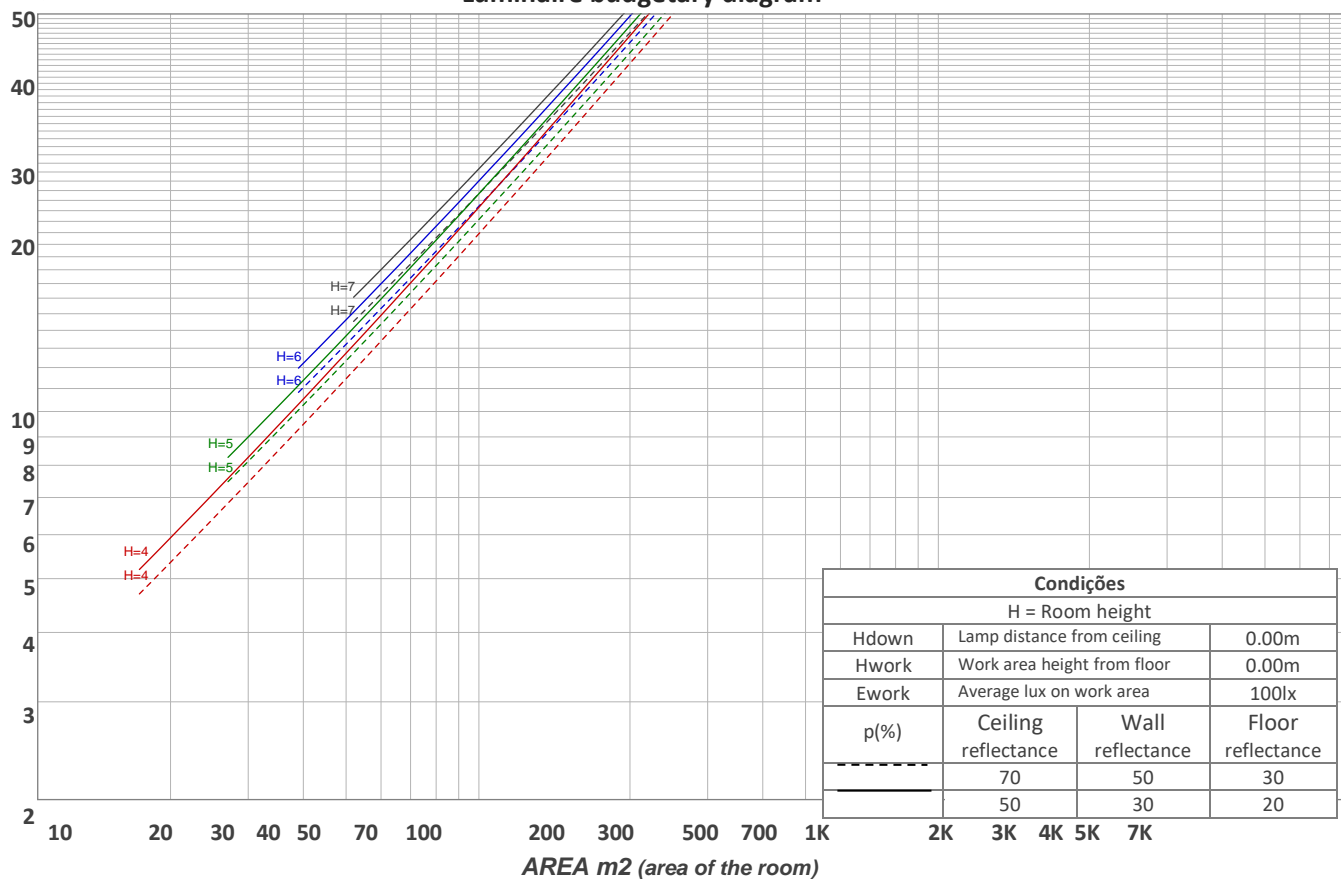
p Ceiling		70	70	50	50	30	70	70	50	50	30
p Walls		50	30	50	30	30	50	30	50	30	30
p Floor		20	20	20	20	20	20	20	20	20	20
Room size X    Y		Viewing direction at right angles to lamp axis					Viewing direction parallel to lamp axis				
2H	2H	18,5	19,0	18,6	19,3	19,5	18,5	19,0	18,6	19,3	19,5
	3H	18,3	19,0	18,7	19,2	19,4	18,3	19,0	18,7	19,2	19,4
	4H	18,2	18,9	18,6	19,1	19,4	18,2	18,9	18,6	19,1	19,4
	6H	18,3	18,8	18,6	19,1	19,5	18,3	18,8	18,6	19,1	19,5
	8H	18,2	18,8	18,6	19,1	19,5	18,2	18,8	18,6	19,1	19,5
	12H	18,2	18,7	18,6	19,1	19,6	18,2	18,7	18,6	19,1	19,6
4H	2H	18,1	18,8	18,6	19,1	19,3	18,1	18,8	18,6	19,1	19,3
	3H	18,2	18,7	18,5	19,1	19,5	18,2	18,7	18,5	19,1	19,5
	4H	18,1	18,6	18,5	19,0	19,5	18,1	18,6	18,5	19,0	19,5
	6H	18,1	18,6	18,6	18,9	19,3	18,1	18,6	18,6	18,9	19,3
	8H	18,1	18,5	18,6	18,9	19,3	18,1	18,5	18,6	18,9	19,3
	12H	18,1	18,4	18,6	18,9	19,4	18,1	18,4	18,6	18,9	19,4
8H	4H	18,0	18,4	18,5	18,8	19,2	18,0	18,4	18,5	18,8	19,2
	6H	18,0	18,3	18,5	18,8	19,3	18,0	18,3	18,5	18,8	19,3
	8H	18,1	18,3	18,6	18,9	19,5	18,1	18,3	18,6	18,9	19,5
	12H	18,1	18,4	18,8	18,9	19,5	18,1	18,4	18,8	18,9	19,5
12H	4H	17,9	18,3	18,4	18,7	19,2	17,9	18,3	18,4	18,7	19,2
	6H	18,0	18,3	18,5	18,8	19,4	18,0	18,3	18,5	18,8	19,4
	8H	18,0	18,3	18,7	18,8	19,4	18,0	18,3	18,7	18,8	19,4
Variation of the observer position for the luminaire distance S											
S = 1.0H		3,4 / -4,5					3,4 / -4,5				
S = 1.5H		5,8 / -5,3					5,8 / -5,3				
S = 2.0H		7,7 / -5,6					7,7 / -5,6				
Standard table		n/a					n/a				
Correction summand		n/a					n/a				
Corrected glare indices referring to 525 lm total luminous flux											

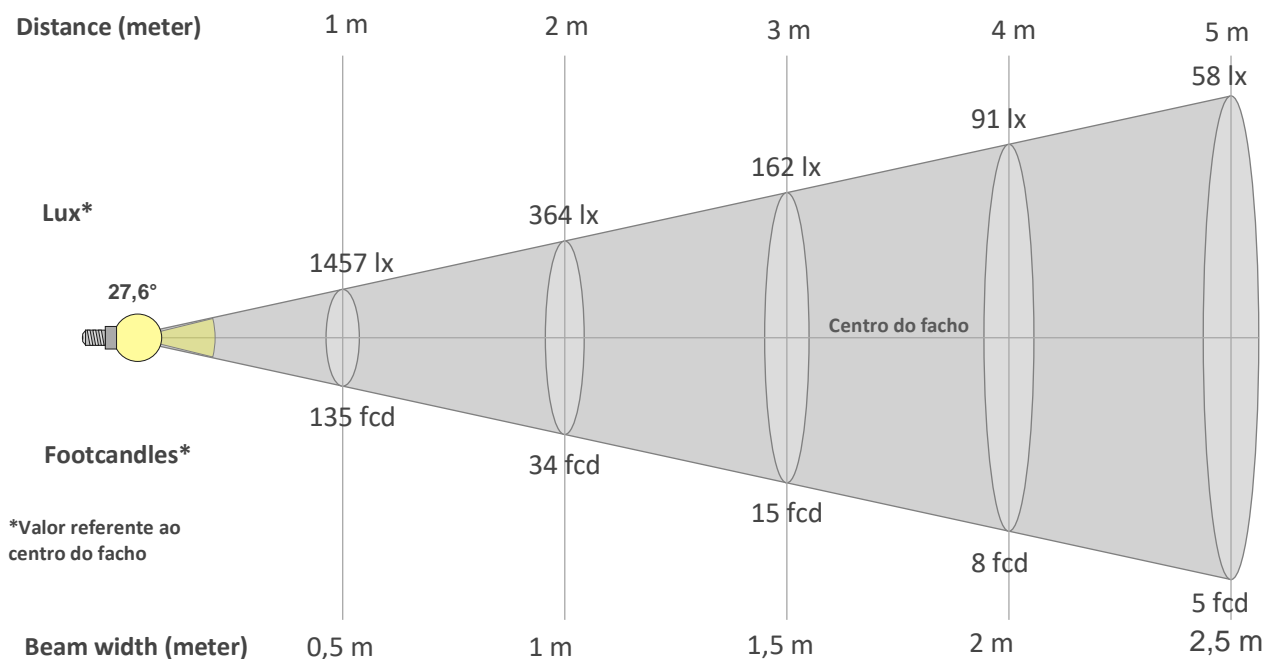
**Coeficiente de utilização**

Ceiling reflectance	80				70				50			30			10			0
Wall reflectance	70	50	30	10	70	50	30	10	50	30	10	50	30	10	50	30	10	0
Floor reflectance	20	20	20	20	20	20	20	20	20	20	20	20	20	20	20	20	20	0
RCR	(RCR: Room Cavity Ratio) Room Values are expressed as percentage of Lumens delivered to the task surface																	
0	119	119	119	119	116	116	116	116	110	110	110	105	105	105	101	101	101	99
1	114	111	109	107	111	109	107	105	104	103	101	100	99	98	97	96	95	93
2	109	104	100	97	106	102	99	96	99	96	94	96	94	92	93	91	89	88
3	104	98	93	90	102	97	92	89	94	90	87	91	88	86	89	86	84	83
4	99	93	88	84	98	91	87	83	89	85	82	87	84	81	85	82	80	79
5	95	88	82	79	94	87	82	78	85	81	77	83	79	77	81	78	76	74
6	91	83	78	74	90	82	78	74	81	77	73	79	76	73	78	75	72	71
7	88	79	74	70	86	79	74	70	77	73	70	76	72	69	75	71	69	67
8	84	76	71	67	83	75	70	67	74	70	66	73	69	66	72	68	66	64
9	81	73	67	64	80	72	67	64	71	67	63	70	66	63	69	66	63	62
10	78	70	64	61	77	69	64	61	68	64	61	67	63	61	67	63	60	59

**Quantidade de luminárias**

**Luminaire budgetary diagram**





## Beam intensities from 1-20m

1m	2m	3m	4m	5m	6m	7m	8m	9m	10m	11m	12m	13m	14m	15m	16m	17m	18m	19m	20m
3,3ft	6,6ft	9,8ft	13,1ft	16,4ft	19,7ft	23ft	26,2ft	29,5ft	32,8ft	36,1ft	39,4ft	42,7ft	45,9ft	49,2ft	52,5ft	55,8ft	59,1ft	62,3ft	65,6ft
1457lx	364lx	162lx	91lx	58lx	40lx	30lx	23lx	18lx	15lx	12lx	10lx	9lx	7lx	6lx	6lx	5lx	4lx	4lx	4lx
135,4fcd	33,8fcd	15fcd	8,5fcd	5,4fcd	3,8fcd	2,8fcd	2,1fcd	1,7fcd	1,4fcd	1,1fcd	0,9fcd	0,8fcd	0,7fcd	0,6fcd	0,5fcd	0,5fcd	0,4fcd	0,4fcd	0,3fcd

## Intensities in 0° c-plane

0°	2°	4°	6°	8°	10°	12°	14°	16°	18°	20°	22°	24°	26°	28°	30°	32°	34°	36°	38°
1457	1427	1365	1278	1151	1014	871	715	575	460	368	304	257	223	194	170	149	127	106	88
100%	98%	94%	88%	79%	70%	60%	49%	39%	32%	25%	21%	18%	15%	13%	12%	10%	9%	7%	6%

## Intensities in 90° c-plane

0°	2°	4°	6°	8°	10°	12°	14°	16°	18°	20°	22°	24°	26°	28°	30°	32°	34°	36°	38°
1457	1427	1365	1278	1151	1014	871	715	575	460	368	304	257	223	194	170	149	127	106	88
100%	98%	94%	88%	79%	70%	60%	49%	39%	32%	25%	21%	18%	15%	13%	12%	10%	9%	7%	6%

## Intensities in 180° c-plane

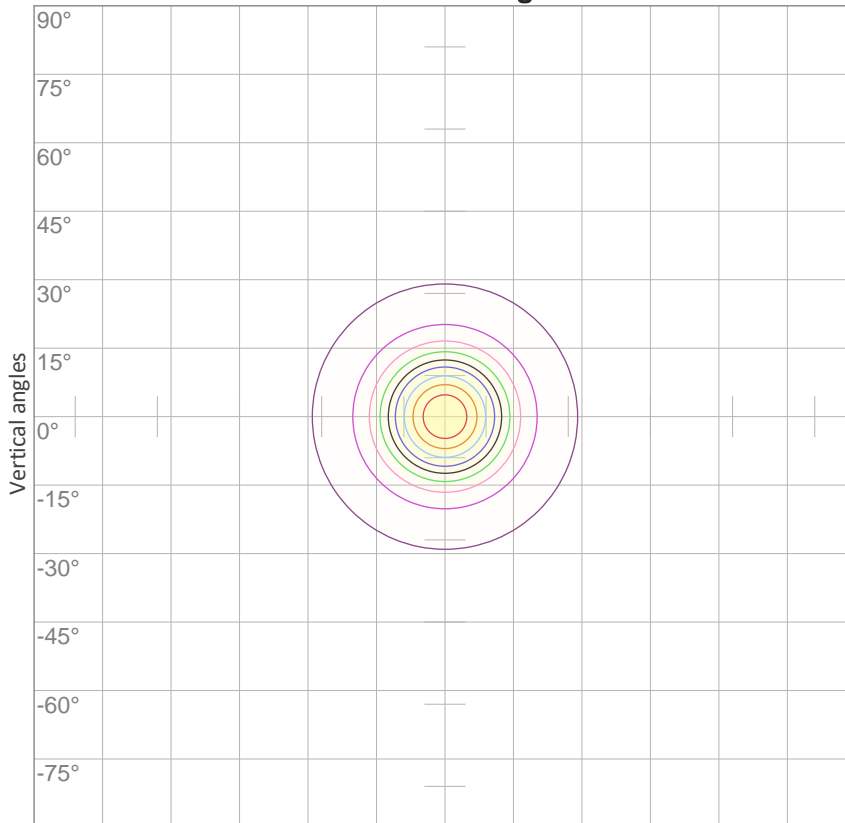
0°	2°	4°	6°	8°	10°	12°	14°	16°	18°	20°	22°	24°	26°	28°	30°	32°	34°	36°	38°
1457	1427	1365	1278	1151	1014	871	715	575	460	368	304	257	223	194	170	149	127	106	88
100%	98%	94%	88%	79%	70%	60%	49%	39%	32%	25%	21%	18%	15%	13%	12%	10%	9%	7%	6%

## Intensities in 270° c-plane

0°	2°	4°	6°	8°	10°	12°	14°	16°	18°	20°	22°	24°	26°	28°	30°	32°	34°	36°	38°
1457	1427	1365	1278	1151	1014	871	715	575	460	368	304	257	223	194	170	149	127	106	88
100%	98%	94%	88%	79%	70%	60%	49%	39%	32%	25%	21%	18%	15%	13%	12%	10%	9%	7%	6%

Beam angle 50%	Field angle 10%	Cutoff angle 2,5%	Intensity ratio in 120° cone	Intensity ratio in 90° cone
27,6°	64,6°	90°	97,5%	94,7%

iso-candela diagram



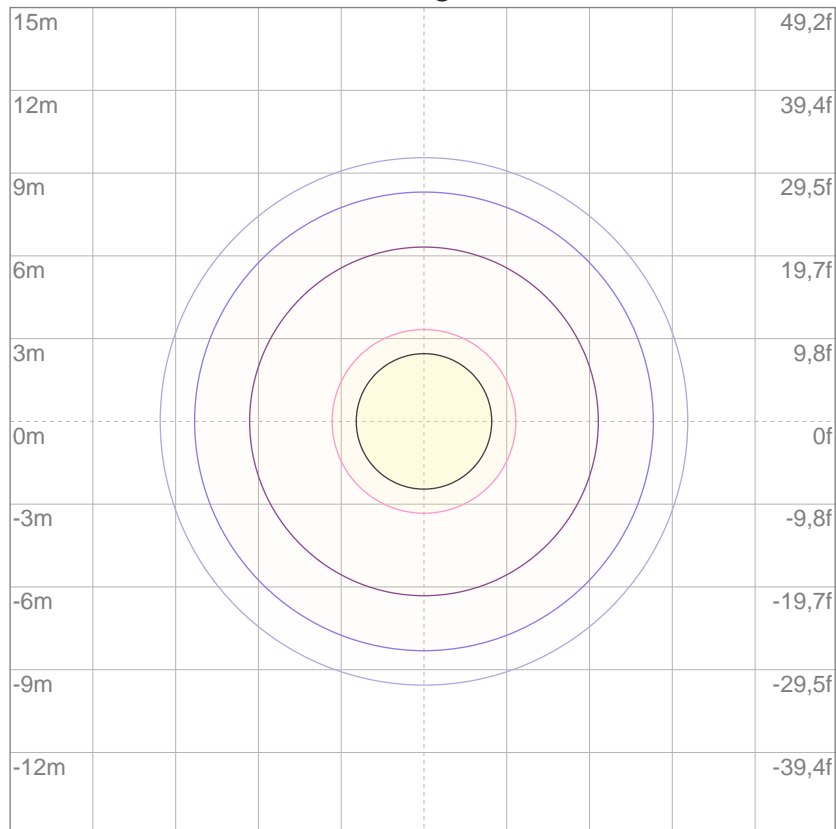
10%	146 cd
20%	291 cd
30%	437 cd
40%	583 cd
50%	728 cd
60%	874 cd
70%	1020 cd
80%	1166 cd
90%	1311 cd

Conditions:

Number of c-planes: 16

Candela at center: 1457 cd

iso-lux diagram



3%	0,437 lx
5%	0,728 lx
10%	1,46 lx
30%	4,37 lx
50%	7,28 lx

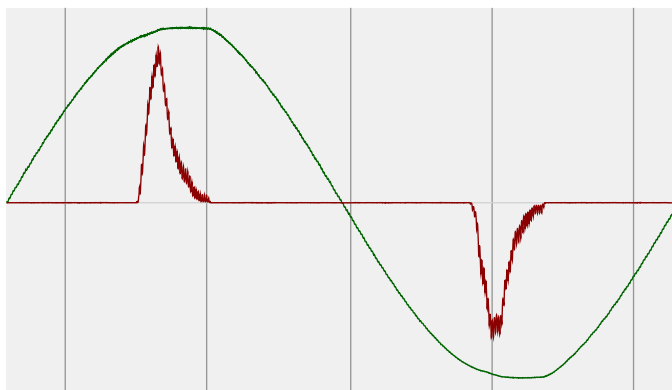
Conditions:

Number of c-planes: 16

Lux at center: 14,6 lx

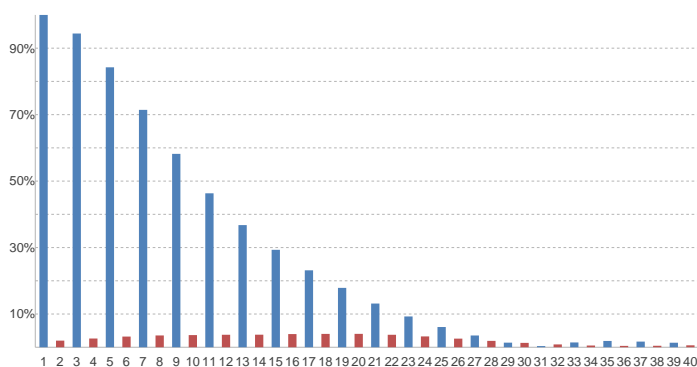
*Lux distribution on a surface when lamp is mounted at 10 meters from the surface.*

### Potência



**Voltagem: 229 V**  
**Corrente: 0,065 A**  
**Frequência: 60,1 Hz**  
**FP: 0,48**

### THD



**THD corrente: 173,77**  
**THD tensão: 1,78**